

# The Holistic Learner

Aligning the Romanian Graduate Profile with Jolly Learning

A strategic guide for early childhood and primary educators on integrating multi-sensory English acquisition with official developmental milestones.

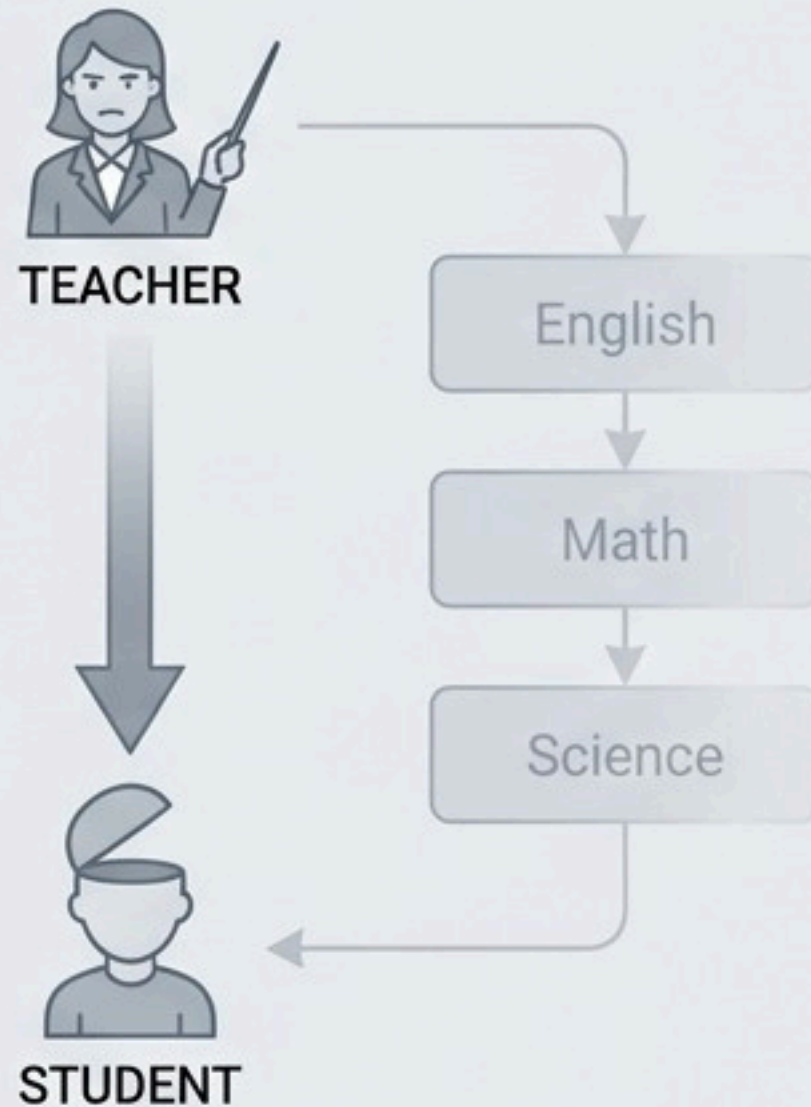


Nicoleta Briciu

# A Paradigm Shift in Early Education

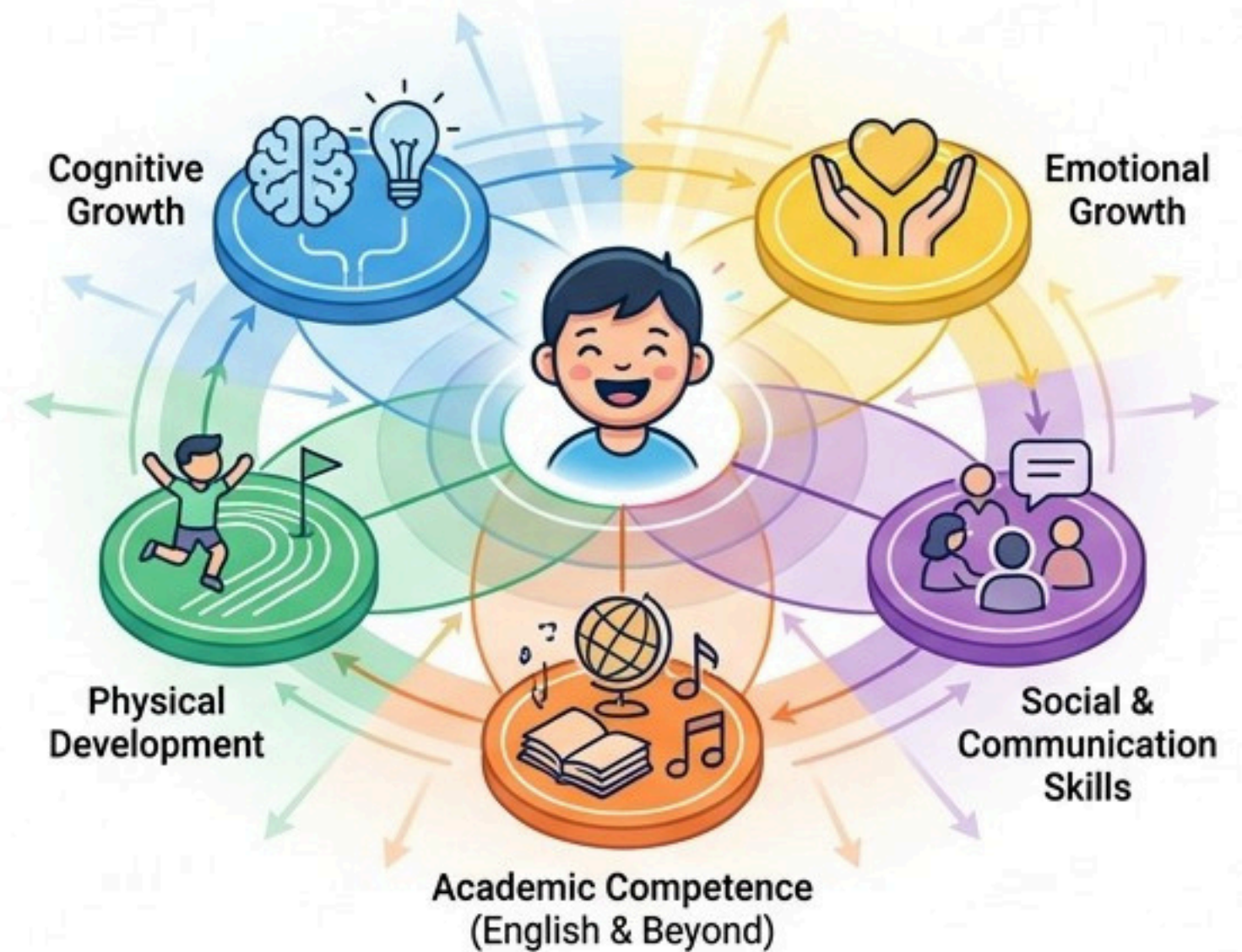
The official curriculum marks a departure from rote memorization to a **competence-based, child-centered paradigm**. According to the RFIDTC guidelines, the goal is acquiring behavioral patterns that ensure the holistic development of the child. **Jolly Learning seamlessly activates** this new paradigm.

## The Traditional View



Isolated subject relying on rote memorization.

## The Competence-Based Paradigm



English acquisition as a dynamic vehicle for cognitive, physical, and emotional growth.

# Holistic Approach to Preschool Development

The 5 fundamental interconnected domains that support the full growth of the child.



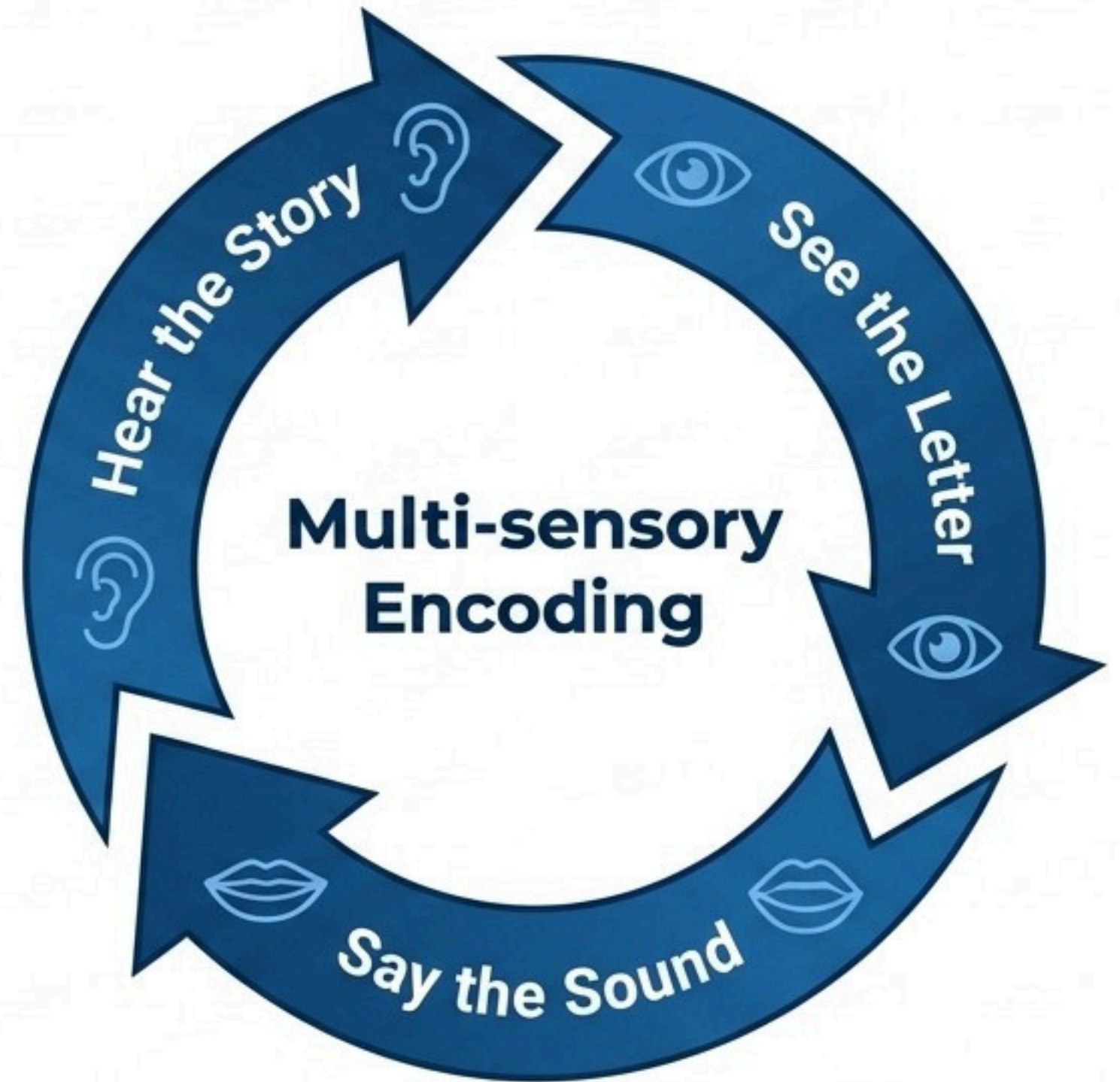
# The Jolly Learning Engine

What makes Jolly Learning uniquely suited to the Romanian Graduate Profile? It is a comprehensive, synthetic phonics programme that engages the whole body and mind, transforming language acquisition into a full-spectrum developmental tool.



# Domain Alignment: Language & Literacy

Official Target	Jolly Alignment
Puts uppercase/lowercase letters in correspondence with the associated sound.	<b>Direct synthetic phonics.</b> Children learn the 42 main sounds of English, establishing immediate sound-to-letter mapping.
Stands and listens to a story to the end without disturbing.	<b>Engaging sound stories.</b> Every letter sound is introduced via a character-driven story that commands attention.



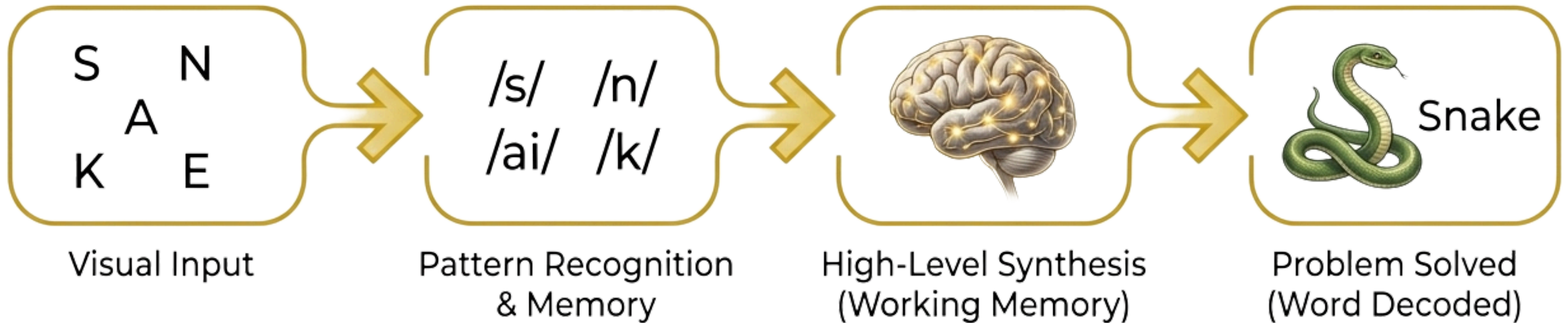
# Domain Alignment: Cognitive & World Knowledge

## Official Target

Groups objects by criteria, solves problems in a group.

## Official Target

Formulates questions about changes in the environment.



Blending and Segmenting are not just reading mechanics; they are rigorous problem-solving tasks that build neural pathways for logical deduction and pattern recognition.

# Domain Alignment: Physical Development & Health

## Gross Motor Skills

**Official Target:** Positions body and limbs appropriately to execute a movement or imitate.

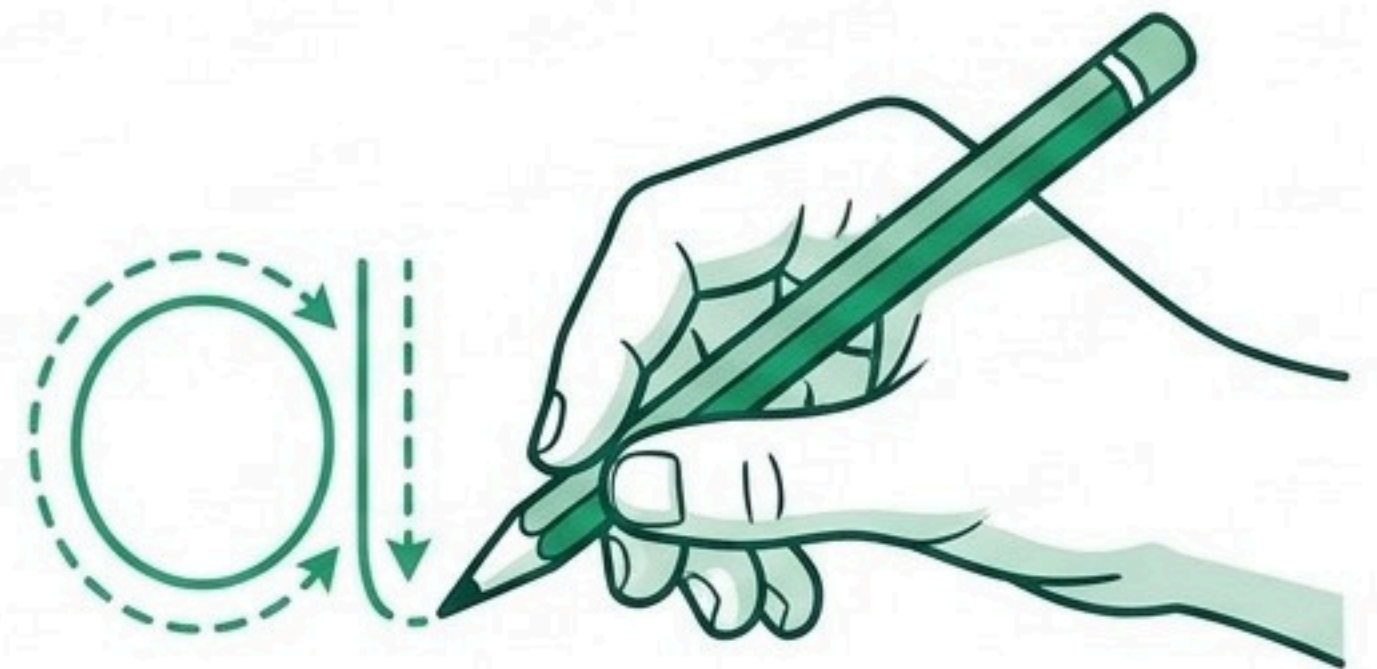
**Jolly Alignment:** Multi-sensory physical encoding. Every single Jolly sound has a specific, corresponding physical action that refines gross motor control.



## Fine Motor Skills

**Official Target:** Experiments writing with various tools.

**Jolly Alignment:** Tactile letter formation. Progression from "air writing" and sensory tracing to building muscle memory for precise pencil grip.



# Socio-Emotional

## Target:

Interacts on own initiative... shares emotions.

## Alignment:

Action-songs, role-play, and collaborative blending games foster a safe environment where children confidently interact and express themselves without fear of failure.



# Learning Attitudes

## Target:

Concentrates on an activity for 20 minutes without supervision.

## Alignment:

The rapid, multi-sensory shifts (Story -> Action -> Song -> Tracing)



sustain high engagement levels, naturally training children to focus for extended periods.

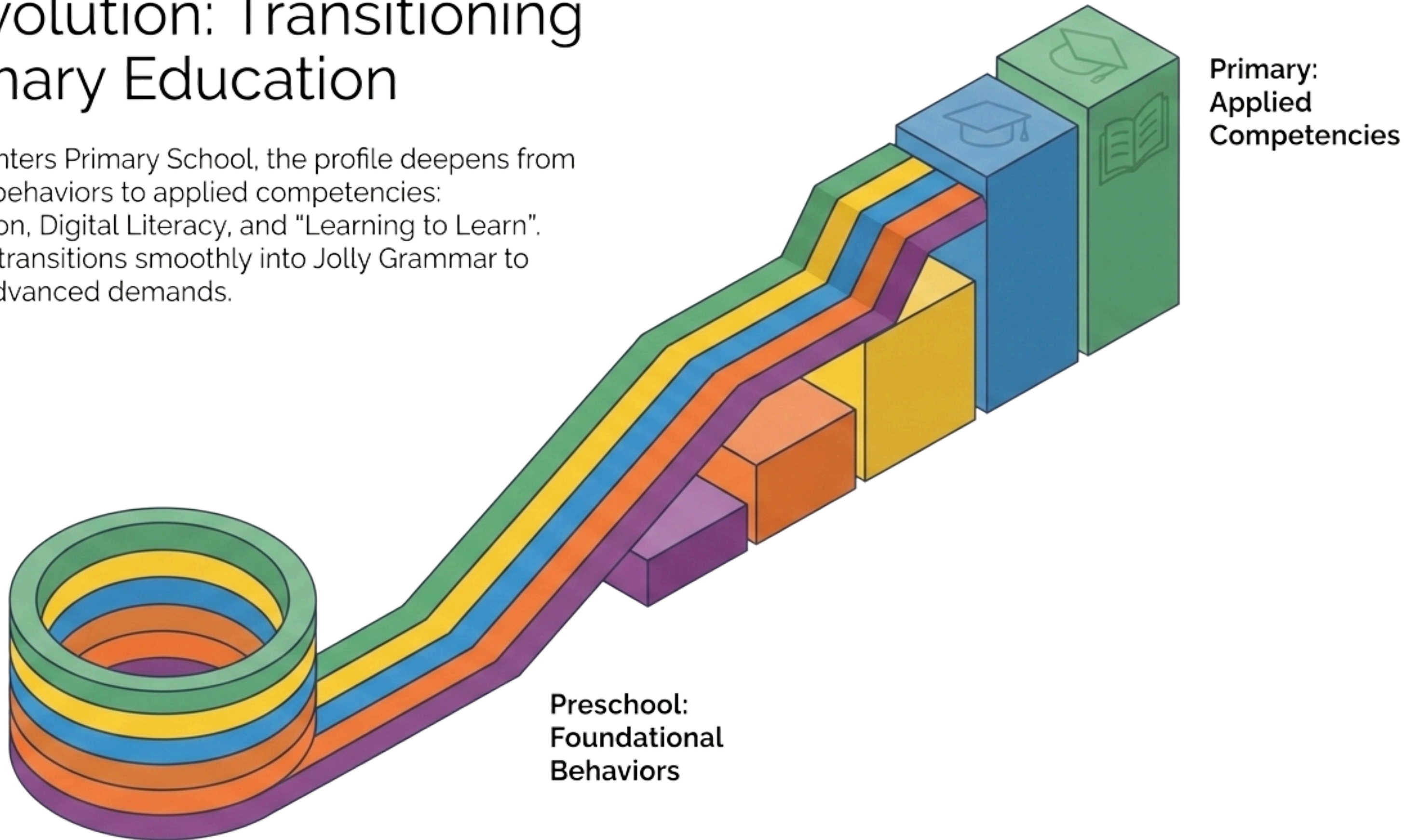
# The Educator's Crosswalk Matrix

A quick-reference guide for lesson planning. See exactly which official behavioral indicator is satisfied by your daily Jolly Learning activities.

	Sound Stories	Physical Actions	Songs & Jingles	Dictation & Blending
Language & Literacy	✓ Narrative Comprehension	✓ Phonemic Awareness	✓ Vocabulary Building	✓ Letter-Sound Linking
Cognitive Development	✓ Sequencing Skills	✓ Memory Recall	✓ Auditory Processing	✓ Pattern Recognition
Physical & Health	✓ Story Enactment	✓ Gross Motor Control	✓ Rhythmic Movement	✓ Fine Motor Precision
Socio-Emotional	✓ Empathy Development	✓ Turn-Taking	✓ Group Collaboration	✓ Confidence Building
Learning Attitudes	✓ Engagement & Curiosity	✓ Sustained Attention	✓ Positive Participation	✓ Task Persistence

# The Evolution: Transitioning to Primary Education

As the child enters Primary School, the profile deepens from foundational behaviors to applied competencies: Communication, Digital Literacy, and "Learning to Learn". Jolly Phonics transitions smoothly into Jolly Grammar to meet these advanced demands.



# The 4 Pillars of the Primary Graduate Profile



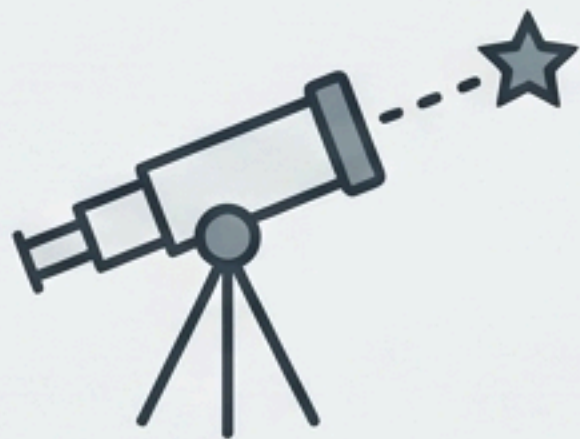
## Communicative

Expresses ideas clearly in written and oral forms; listens actively and formulates questions.



## Creative

Proposes new solutions; creates stories and projects in a unique, personal manner.



## Prospective

Connects present learning to future goals; uses technology safely and effectively.



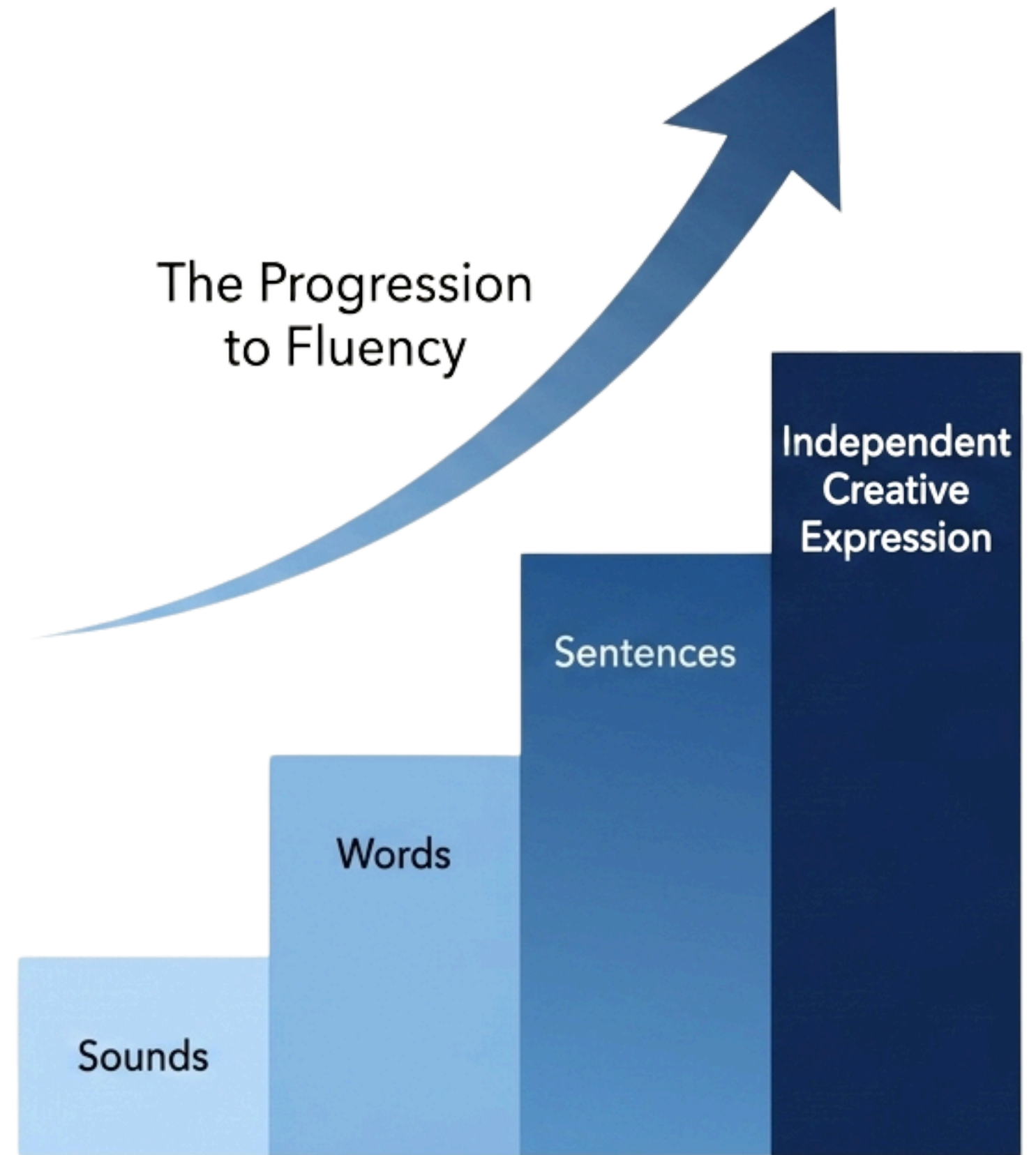
## Ethical

Respects rules, understands rights and duties, and communicates with awareness of impact on others.

# Cultivating the Communicative & Creative Child

Official Target: Identifies info in foreign language... expresses ideas/feelings in written and oral messages.

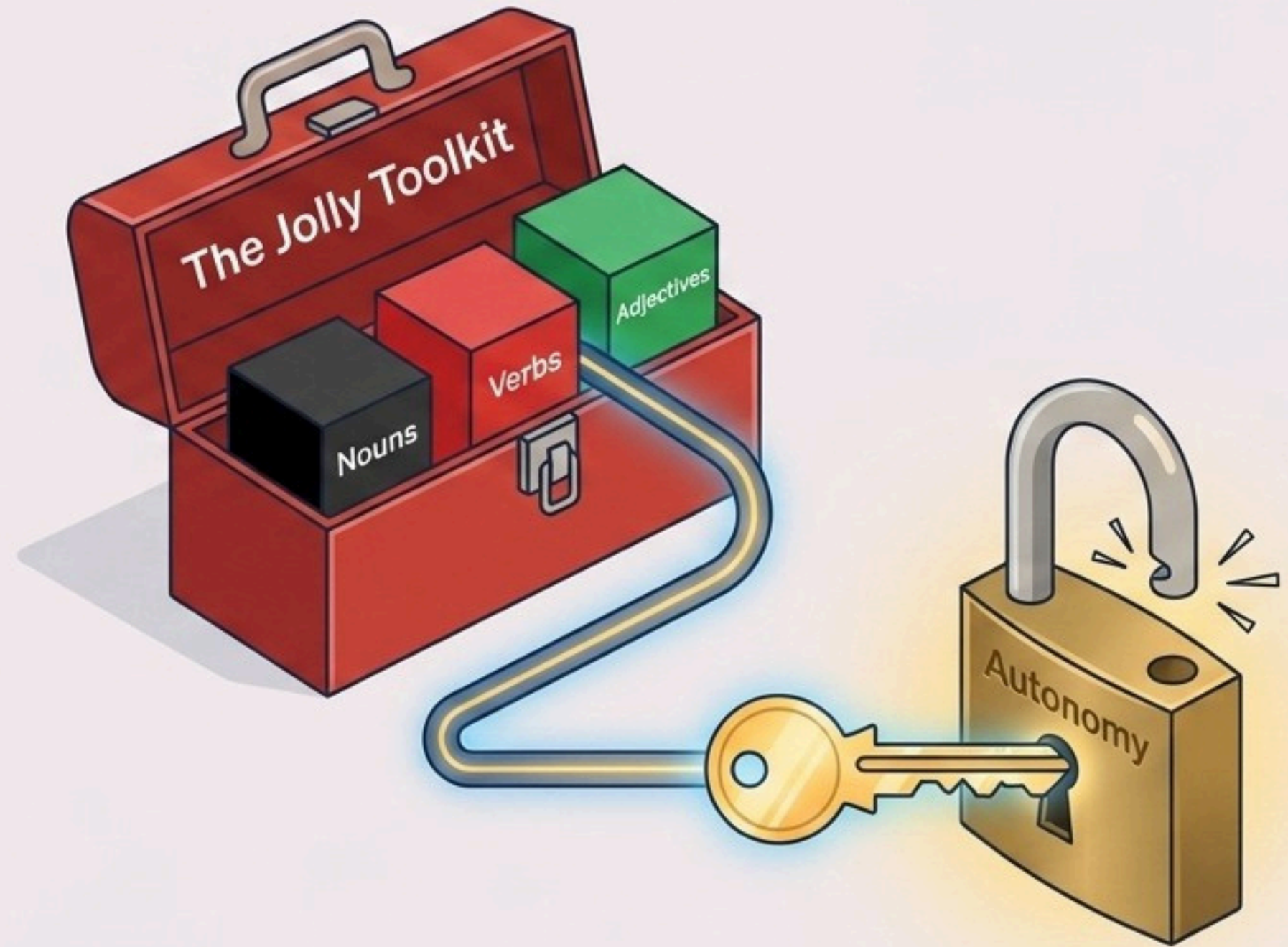
Jolly Alignment: Jolly Grammar moves students beyond decoding into true reading comprehension and creative writing.



# Autonomy in Action: Learning to Learn

**Official Target:** Identifies and applies effective learning strategies... assumes responsibility for own learning.

**Jolly Alignment:** Jolly Grammar equips students with an explicit, color-coded system for parts of speech and spelling rules. This visual strategy demystifies language structure, giving students a reliable, independent framework to analyze texts and self-correct.



# Empowering the Facilitator

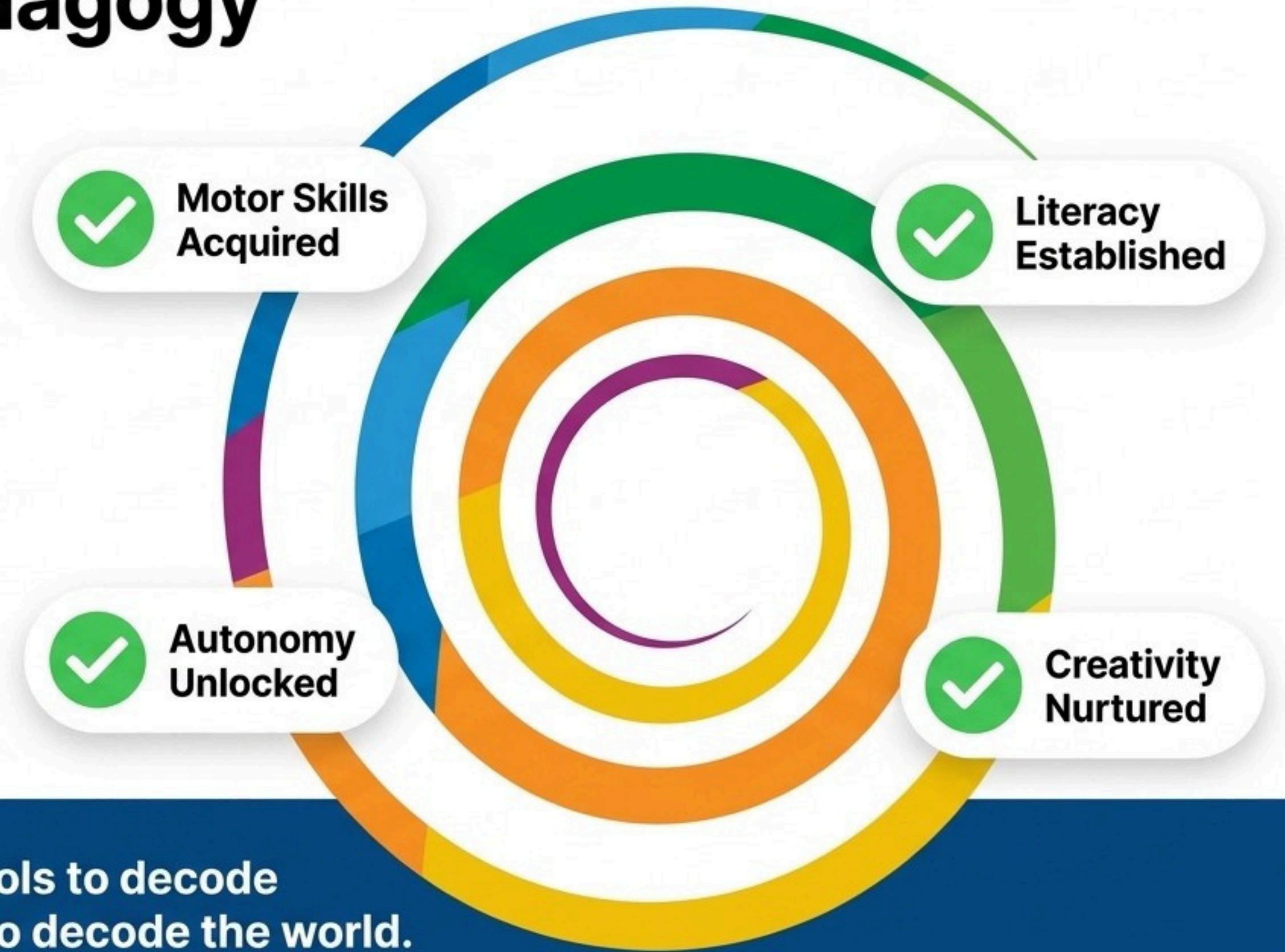
The official curriculum requires teachers to be **empathetic, autonomous, and reflective facilitators**. By providing a structured yet **creative framework**, Jolly Learning frees the teacher's cognitive load—allowing more time for observation and community building.



# Policy Meets Pedagogy

The holistic child is realized when ambitious policy is met with effective pedagogy.

Jolly Learning is a proven, multi-sensory fast-track to achieving the Graduate Profile across both early childhood and primary education.



**Equip your students with the tools to decode language, and you equip them to decode the world.**

# Building the future step by step, sound by sound.

The graduate of tomorrow – autonomous, communicative, and confident – begins with a positive learning experience today.



Implement the Jolly Learning method to turn educational standards into classroom reality.

Nicoleta Briciu